

## Commentary



### A Path to Progress . . . . . 20

*The startup company Deep Isolation is taking a page from Silicon Valley in hopes of fast-tracking its nuclear waste disposal technology.*

## Decontamination & Decommissioning



### Decommissioning Strategies . . . . . 24

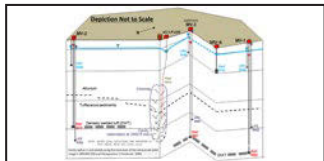
*An excerpt from the World Nuclear Association report, Methodology to Manage Material and Waste from Nuclear Decommissioning.*



### Bringing Down West Valley's Vit Plant . . . . . 29

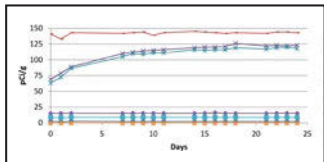
*Crews at the West Valley Demonstration Project are bringing down seven ancillary support buildings after demolishing the site's vitrification facility late last year.*

## Environmental Remediation



### Path to Subsurface Closure: When Real and Predicted Data Don't Match. . . . . 33

*Tracking residual subsurface contamination from underground nuclear tests at the Central Nevada Test Area.*



### Recent Regulatory Challenges Associated With Managing U.S. NORM and TENORM Waste Streams . . . . . 43

*Recent changes to regulations governing naturally occurring radioactive materials are posing new challenges to affected industries.*



### Weldon Spring's New Center. . . . . 48

*A new interpretive center and administrative office space is taking shape at the site of a Cold War uranium processing plant in Missouri.*

### On the Cover

Heavy equipment is used to tear down the former vitrification plant at the West Valley site in New York. (Photo: DOE/CHBWV)

### Next Issue

- Radioactive Waste Management
- Transportation

See page 56

## Meeting Reports

### Finding the Next Generation of Innovators. . . . . 52

A report from the 2019 Waste Management Conference, held March 3-7 in Phoenix, Ariz.

## 2019 Radwaste Solutions Buyers Guide

### Index to Categories . . . . . 58

An alphabetical listing of the categories covered in the Buyers Guide, with cross-references and page locations of each category.

### Products, Materials, and Services Directory. . . . . 63

An alphabetical listing of product, material, and service categories, giving names and locations of suppliers for each category.

### Directory of Suppliers. . . . . 103

An alphabetical listing of suppliers, giving the complete mailing address and telephone number of each company, as well as the name of the person to contact for product information. Fax, website, and e-mail information is provided when available. Code numbers of products supplied by the company follow each listing.

#### Part I—Companies located in the United States. . . . . 103

#### Part II—Companies located outside the United States . . . . . 117

**Acknowledgments:** The directory sections of this Buyers Guide are kept current by means of an online database that was set up by Joe Koblich, Director, Information Technology, and his staff. Special acknowledgment goes to Advertising Department Staffers Erica McGowan and Jessica Vazquez for their diligence and perseverance in carrying out the advertising coordination, data collection, editing, and input processes. Layout and production are carried out by Chris Salvato, Radwaste Solutions Desktop Editor.

## Departments

- |   |  |
|---|--|
| <b>4 Editor's Note</b><br>Comments on this issue      | <b>120 Moving Up</b><br>People in the news                 |
| <b>6 Index to Advertisers</b>                         | <b>121 It's Business</b><br>Contracts, business news, etc. |
| <b>12 Headlines</b><br>Industry news                  | <b>122 Calendar</b><br>Meetings of interest                |
| <b>99 Radwaste Solutions Subscription Information</b> |  |

## Editorial Staff

**PUBLISHER** Rick Michal

**EDITOR** Tim Gregoire

**DESKTOP EDITOR** Chris Salvato

**COPY EDITOR** Allen Zeyher

## Advertising & Circulation Staff

**ADVERTISING DIRECTOR** Jeff Mosses

**ADVERTISING/PRODUCTION ASSISTANT MANAGER** Erica McGowan

**ADVERTISING SALES ASSISTANT** Jessica Vazquez

## ANS Officers

**PRESIDENT** Marilyn C. Kray

**VICE PRESIDENT/PRESIDENT-ELECT** Mary Lou Dunzik-Gougar

**TREASURER** W. A. "Art" Wharton III

**CHAIRMAN, PUBLICATIONS STEERING COMMITTEE** Donald G. Lorentz

## Administrative

**EXECUTIVE DIRECTOR** Robert C. Fine

### ANS HEADQUARTERS

555 N. Kensington Ave.  
La Grange Park, IL 60526  
708/352-6611  
Fax 708/352-0499  
www.ans.org

### RADWASTE SOLUTIONS EDITORIAL

166 Kensington Dr.  
Madison, WI 53704  
414/530-2455  
Fax 708/579-8204  
editor@radwastesolutions.org

### RADWASTE SOLUTIONS ADVERTISING

Phone: 708/579-8226 • 800/682-6397 • Fax: 708/352-6464  
advertising@ans.org • www.ans.org/rs

*Radwaste Solutions* (ISSN 1529-4900), Volume 26, Number 2. Published two times a year (Spring and Fall) by the American Nuclear Society, Inc., with business, executive, and editorial offices at 555 N. Kensington Ave., La-Grange Park, IL 60526. Copyright © 2019 by the American Nuclear Society.

Subscription rate for 2019 is \$475, which includes complimentary electronic access, 1994 to current issue; for subscriptions outside of North America, add \$25 for shipping and handling. This rate is valid for all libraries, companies, departments, and any individual subscribers (who are not ANS members). Alternatively, subscription rate is \$430 for Electronic Access Only to entire historical archive, 1994 to current issue. Individual ANS members receive an online subscription to *Radwaste Solutions* as part of membership. A print subscription for members is \$30; members who live outside of North America should add \$25 for additional postage and special handling. Single copy price is \$125, plus \$12.50 for customers outside of North America.

Opinions expressed in this publication are those of the authors and do not necessarily reflect the opinions of the publisher, the editor, the American Nuclear Society, or the organizations with which the authors are affiliated, nor should publication of the authors' points of view be construed as endorsement by the American Nuclear Society.

Reprints of articles that appear in *Radwaste Solutions* can be purchased by contacting Ed Du Temple, Production Supervisor, American Nuclear Society, 708/579-8310; edutemple@ans.org