

12900 - Computers & Accessories

Hurst Technologies Corp., Angleton, TX (A, CG, C, IO)
 Industrial Audit Corp., Orillia, Ontario, Canada (HH)
 Labor Sync, Dumont, NJ (HH)
 MKS Instruments, Inc., Andover, MA (A, C, D, IO)
 Plantation Productions, Inc., Riverside, CA (A, D, MP)
 Rockwell Automation, Inc., Milwaukee, WI (AI, C, D, HH, IO, MC, MP, MN)
 Rolls-Royce Civil Nuclear, Warrington, United Kingdom (AI, D, ES, HH, H, IO, MF, MS, MC, MP, MN, PR, TD, VD)
 Rolls-Royce Plant Automation & Monitoring Systems, Huntsville, AL (IO, VD)
 Schneider Electric, (formerly Invensys), Oceanside, CA (A, CG, D, IO, VD)
 Siemens Building Technologies, Buffalo Grove, IL (AI)
 Siemens Process Industries and Drives, Hauppauge, NY (D, HH, IO)
 Staco Systems, Inc., Irvine, CA (IO)
 Taurus Telesys Inc., Newport News, VA (CG, D, IO, MN)
 Toshiba America Energy Systems Corp., Charlotte, NC (A, AI, CG, C, D, DD, ES, HH, IO, MF, MS, MC, MP, MN, PR, TD, VD)

13050 Concrete Breaking, Drilling, Sawing & Scabbling

C Contractors
 E Equipment
 R Equipment Rental

AMEASOL - American Measurement Solutions LLC, Santa Fe, NM (E, R)
 American DND Inc., Grand Island, NY (C, E, R)
 BHI Energy, Weymouth, MA (C, E, R)
 BHI Energy, (Power Services), Piedmont, SC (C, E, R)
 Bluegrass Concrete Cutting, Inc., Greenville, AL (C)
 Brokk AB, Skelleftea, Sweden (E)

◆ **Brokk Inc., (Sub. of Brokk-Sweden), (Nuclear Div.), Santa Fe, NM (E, R)**

◆ **Cutting Edge Services Corp., Batavia, OH (C, E)**
 Fuel Tank Maintenance Co., LLC, Cookeville, TN (C)
 James Fisher Nuclear Ltd., Preston, United Kingdom (C, E)
 Kipper Tool Co., Gainesville, GA (E)
 NLB Corp., Wixom, MI (E, R)
 Nuvia-USA, (Nuvia Protection, Nuvia Supports, Nuvia Structures and Nuvia Process), Charlotte, NC (C, E, R)
 Underwater Engineering Services, Inc., (UESI), Fort Pierce, FL (C)

13180 Condensers, Air-Cooled

AMMI Risk Solutions, Inc., Minneapolis, MN
 Curtiss-Wright Nuclear Division, QualTech NP, Cincinnati, OH
 DC Fabricators Inc., Florence, NJ
 ECU Corporation, Cincinnati, OH
 ◆ Ellis & Watts Global Industries, Inc., Batavia, OH
 ◆ Holtec International, Camden, NJ
 Intek, Inc., Westerville, OH
 Naval Group, (Formerly DCNS), Paris, France
 ◆ NuSource LLC, Alexandria, VA
 SPX Cooling Technologies, Inc., Overland Park, KS

13200 Condensers, Power Plant

AMMI Risk Solutions, Inc., Minneapolis, MN
 ◆ BWX Technologies, Inc., Lynchburg, VA
 Curtiss-Wright Nuclear Division, QualTech NP, Cincinnati, OH
 DC Fabricators Inc., Florence, NJ
 Deerpath Corp., St. Joseph, MI
 ◆ Framatome, (North American Headquarters), Charlotte, NC

◆ Denotes advertiser—see adjoining pages or refer to index to Advertisers

Heatric Division of Meggitt (UK) Ltd., Poole, Dorset, United Kingdom

◆ Holtec International, Camden, NJ
 Intek, Inc., Westerville, OH
 ◆ Joseph Oat Corp., Camden, NJ
 Marks Brothers, Inc., Boring, OR
 Mitsubishi Nuclear Energy Systems, Inc., (A Sub. of Mitsubishi Heavy Industries, Ltd.), Charlotte, NC
 Naval Group, (Formerly DCNS), Paris, France
 ◆ NuSource LLC, Alexandria, VA
 Plastacor, Inc., Hingham, MA
 SPX Heat Transfer LLC, Tulsa, OK
 Taprogge America Corp., Farmingdale, NY

13220 Condensing Pots, Steam

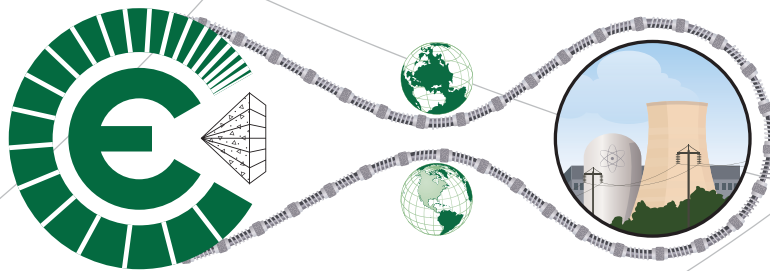
AMMI Risk Solutions, Inc., Minneapolis, MN
 DC Fabricators Inc., Florence, NJ
 ◆ Joseph Oat Corp., Camden, NJ
 Marks Brothers, Inc., Boring, OR
 ◆ NuSource LLC, Alexandria, VA
 Toshiba America Energy Systems Corp., Charlotte, NC

13400 Connectors—also see Feedthroughs

DC Data Communications
 E Electrical
 EG Electrical, Glovebox
 EQ Electrical, Quick Disconnect
 FO Fiber Optic
 T Thermocouple

◆ CableLAN Nuclear, Inc., Fort Myers, FL (DC, FO)
 Consolidated Power Supply, (Div. of Consolidated Pipe & Supply Co., Inc.), Birmingham, AL (T)
 Curtiss-Wright Nuclear Division, QualTech NP, Cincinnati, OH (E, EQ, FO, T)
 ◆ Framatome, (North American Headquarters), Charlotte, NC (T)
 Kanata Electronic Services Ltd., Toronto, Ontario, Canada (EQ)
 ◆ Kinectrics Inc., Toronto, Ontario, Canada (FO)

ENGINEERED SOLUTIONS FOR LARGE SCALE CUTTING & DRILLING



CUTTING EDGE
 SERVICES CORP.

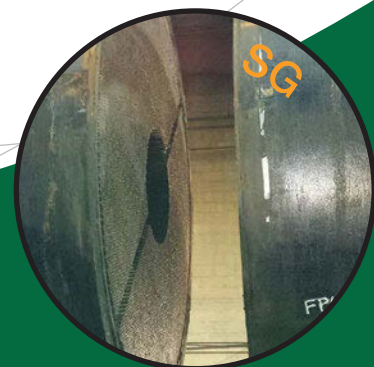
www.steamgeneratorcutting.com

NUCLEAR CUTTING EXPERTS

Self-Clamping Remote Wire Saws

ALARA

- Steam Generators
- RCS Piping
- Bioshield Walls
- Hot Cells



On the **Cutting Edge** of Technology
513 388-0199