

59800 – Pipe

- Parker Hannifin Corp., Cleveland, OH (CS, CO, SL, S, SS)
 PCC Rollmet Inc., Irvine, CA (CM, NC, SL, S, T, ZS)
 Penn Iron Works, Inc., Wyomissing, PA (S)
 ♦PMT Nuclear, (Affl. of AMS Mechanical Services, Inc.), Burr Ridge, IL (CS, L, NC, PL, SL, S, SS)
 Ranor, Inc., Westminister, MA (S)
 Seafab Metals Co., (Div. of The Doe Run Co.), Casa Grande, AZ (L)
 Tioga, Philadelphia, PA (CS, CM, NC, PL, SL, S, SS, T, TS, Z, ZS)
 ♦Toshiba America Energy Systems Corp., Charlotte, NC (CS, CM, NC, SL, S, SS)
 TW Metals - Nuclear Materials Solutions, Linden, MI (CS, CM, CO, NC, PL, SL, S, SS, T, TS, Z, ZS)
 ♦Westinghouse Electric Co. LLC, Cranberry Township, PA (Z, ZS)
 ♦Wilh. Schulz GmbH, Krefeld, Germany (CS, CM, SL, S, SS, T, TS, Z, ZS)
 Wright Industries, (a Doerfer Co.), Nashville, TN (CS, S)
 ZM Tubes, (Zwahlen & Mayr SA), Aigle, Switzerland (S)

59820 Pipe Bending Services

- American Mergers & Manufacturing International, LLC, Minneapolis, MN
 AWS Schaefer GmbH, Wilnsdorf, Germany
 CB&I, Charlotte, NC
 Energy Steel & Supply Co., Lapeer, MI
 J. F. Ahern Pipe Fabrication, Fond du Lac, WI
 ♦Joseph Oat Corp., Camden, NJ
 Parker Hannifin Corp., Cleveland, OH
 ♦PMT Nuclear, (Affl. of AMS Mechanical Services, Inc.), Burr Ridge, IL
 Tioga, Philadelphia, PA

59850 Pipe & Tube Machinery & Equipment—also see *Cleaning Equip.* (Tube Cleaning); *Welding Equip.*

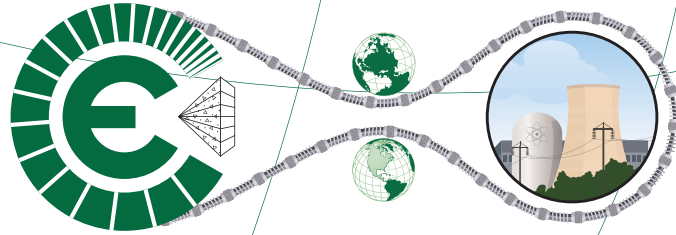
- B Bending, Pipe
 BT Bending, Tube
 BP Beveling, Pipe
 BV Beveling, Tube
 CR Crimpers, Tube
 CP Cutting, Pipe
 CT Cutting, Tube
 CI Cutting, In-Place
 EH Expanders, Tube, Hydraulic
 EM Expanders, Tube, Mechanical
 IT Instrumentation Tubing, Orbital Welding
 PO Primary, Orbital TIG Welding
 RS Rounding & Sizing
 T Threading, Pipe
 W Weld End Preparation

- American Mergers & Manufacturing International, LLC, Minneapolis, MN (B, BT, BP, BV, CR, CP, CT, CI, EH, EM, IT, PO, RS, T, W)
 ♦AREVA Inc., (North American Headquarters), Charlotte, NC (CT, CI, EH, EM, PO, W)
 AWS Schaefer GmbH, Wilnsdorf, Germany (B, BT, BP, EH, EM)
 AZZ | WSI LLC, Norcross, GA (CP, CI)
 ♦Brokk Inc., (Sub. of Brokk-Sweden), (Nuclear Div.), Santa Fe, NM (CP, CT, CI)
 CB&I, Charlotte, NC (B)
 Cofely Endel, (GDF SUEZ Group), Paris La Défense, France (B, BT, CP, CT, W)
 Consolidated Power Supply, (Div. of Consolidated Pipe & Supply Co., Inc.), Birmingham, AL (B, BT, BP, BV, CR, CP, CT, CI, EH, EM, IT, PO, RS, T, W)
 ♦Cutting Edge Services Corp., Batavia, OH (CP, CT)
 EFCO USA, Inc., Charlotte, NC (PO)
 ♦E.H. Wachs, Lincolnshire, IL (BP, BV, CP, CT, CI, IT, PO, W)
 Fine Tubes Ltd., (Fine Tubes France), Orleans, France (IT)
 Gardner Denver Waterjetting Systems, Inc., (Sub. of Gardner Denver), Houston, TX (CT)
 ♦Hydratight, (DL Ricci Machining), (Biach Specialty Nuclear Tensioners), Houston, TX (BP, BV, CP, CT, CI, W)
 HydroPro Inc., Bourbon, MO (EH, EM, W)
 James Fisher Technologies, (Sub. of James Fisher Nuclear, Ltd.), Longmont, CO (CI)

♦ Denotes advertiser—see adjoining pages or refer to Index to Advertisers

Pipe & Tube Machinery & Equipment – 59850

ENGINEERED SOLUTIONS FOR LARGE SCALE CUTTING & DRILLING



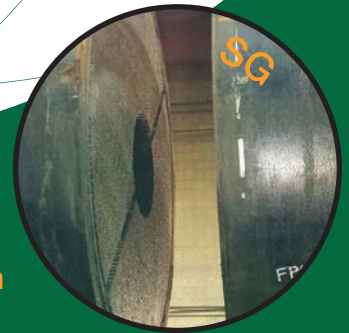
CUTTING EDGE SERVICES CORP.

NUCLEAR CUTTING EXPERTS

Self-Clamping Remote Wire Saws

ALARA

Steam Generators • Bioshield Walls
RCS Piping • Hot Cells



On the **Cutting Edge**
of Technology

www.steamgeneratorcutting.com

513 388-0199

THE SAFER CHOICE IN FIELD MACHINING EQUIPMENT

E.H. Wachs DynaPrep MDSF split frame and EPD electric power drive is the first machining system designed from the ground up with operator safety, ALARA principals, CE compliance and contamination concerns in mind. Wachs MDSF offers remote control of drive motor and trip operation across all drive types including pneumatic, hydraulic and electric.

- Cutting, beveling, counterboring, and flange facing
- Clean, powerful, lightweight design
- True remote control field machining
- Fast setup and ease of operation
- Available as purchase or rental



WACHS **E.H. WACHS**[®]
A Division of **ITW**
Superior Equipment. Complete Support.™

To learn more contact your local E.H. Wachs representative.
CALL 847-537-8800 OR VISIT EHWACHS.COM